

DAISETSUZAN KURODAKE

THE DAISETSUZAN SOUNKYO-KURODAKE ROPEWAY

The forest is the sweetheart of the sea.

The Daisetsuzan Mountains



Mt. Kurodake side area (The view from the ropeway going up)



Sounkyo Hot Spring side area (The view from the ropeway going down)

Events Calendar



The Gorge Fire Festival

It is a traditional festival of Ainu people that has been celebrated since old times. This colorful event is concluded by exciting fireworks.
(late July)

The Mt. Kurodake Hiking Race

This event is not so much a competition as it is a hike in order to make own best. Participants can hike at their own pace just enjoying the surrounding nature, taking pictures.
(early September)



Sounkyo Ice Waterfall Festival

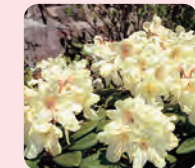
This is a fantasy world made by cooperation of man and nature. Ice caves and galleries are lightened up with artificial lights creating fantastic and beautiful world. Don't forget to visit a shop selling all kinds of popular foods and local specialties of Hokkaido!
(late January - late March)

SPRING

the Japanese Alpine Cherry blossoms are in bloom



The Japanese Alpine Cherry and the snow-covered Mt. Kurodake



Rhododendron aureum Georgi



Primula cuneifolia



Potentilla miyabei

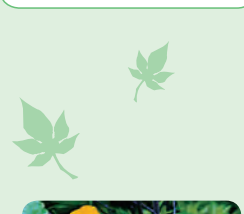
Many Alpine plants blooming season starts when Mt. Kurodake is still covered with snow. The Japanese Alpine Cherry blossom season lasts from the end of May to beginning of June. Let's enjoy viewing cherry blossoms!



SUMMER

The alpine flowers blooming season at its peak!

Many colorful alpine flowers are in full bloom. The blooming season of alpine flowers lasts from the end of June to the end of July.



Trollius riederianus



Weigela middendorffiana



Fritillaria camschatcensis



Phyllodoce caerulea



Sieversia pentapetala (L.) Greene

The Four Seasons in Mt. Kurodake

AUTUMN

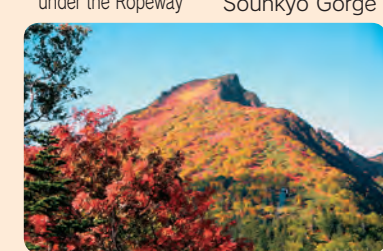
The best time to see fall foliage



Panorama of fall foliage under the Ropeway

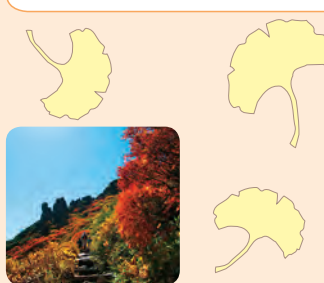


Fall foliage in the Sounkyo Gorge



Fall foliage panorama viewing from Takamatsudai at the 5th station

The spectacular fall foliage season of the Mt. Kurodake lasts about a month (late September-early October). Leaves change color in the fall, starting from the mountain top and gradually spreading across the Sounkyo Gorge.



Fall foliage around the Beckoning Rocks at the 9th station

WINTER

The best time to experience the finest powder snow



The Kurodake Ski Resort



Glittering trees



Snowshoeing



A pine and a birch

Powder snow makes attractive Mt. Kurodake in winter. Enjoy skiing and snowshoeing. You can also enjoy the breathtaking view of the snow-covered Daisetsuzan Mountains.

PRICE LIST (tax included)

Ropeway rates

ROUND TRIP		Adult	Child
	Regular	¥1,850	¥950
	Group discount	¥1,600	¥800
	Special discount for the handicapped	¥1,350	¥700

Chair Lift rates

ROUND TRIP		Adult	Child
	Regular	¥600	¥400
	Group discount	¥550	¥350
	Special discount for the handicapped	¥500	¥300

※Group discount (groups of 10 and more)

※Adult (Jr. high school students and older) Child (Elementary school students and younger)

OPERATION SCHEDULE

● 4/ 1 ~ 4/30 8:00 ~ 16:30	● 10/ 1 ~ 10/15 6:00 ~ 17:00
● 5/ 1 ~ 5/31 7:00 ~ 17:00	● 10/16 ~ 10/31 7:00 ~ 16:30
● 6/ 1 ~ 8/20 6:00 ~ 19:00	● 11/ 1 ~ 11/30 8:00 ~ 16:30
● 8/21 ~ 9/30 6:00 ~ 18:00	● 12/ 1 ~ 3/31 8:00 ~ 16:00

※ Ropeway runs every 20 minutes.

※ Chairlift operation starts 30 minutes after opening the Kurodake Ropeway and ends 30 minutes prior to closing it.

※ During winter the Kurodake Ropeway and chairlift are closed due to the annual check-up.

※ The Kurodake Ropeway and chairlift are suitable for wheelchair users.

※ No pets are allowed either in the ropeway or chairlift.

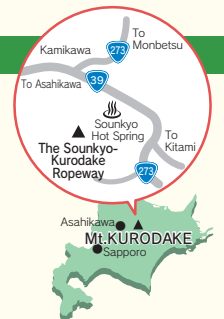
How to access

● BY PUBLIC TRANSPORTATION

From JR Kamikawa Station take Dohoku bus bound for Sounkyo Terminal. About 3-minute walk from the last bus stop.

● BY CAR

Drive on the Asahikawa-Monbetsu Highway, get off the Highway at the Kamikawa-Sounkyo Interchange, and drive along Route 39. Approximately 30-minute drive to Kitami district (Free parking lot is available)
(2.5 hours from Sapporo, 1.5 hours from Asahikawa)



The Daisetsuzan Sounkyo-Kurodake Ropeway

Rinyu Corp. Sounkyo Office
Sounkyo, Kamikawa-cho, Kamikawa-gun
078-1701 Hokkaido, Japan
TEL: +81(0)1658-5-3031
FAX: +81(0)1658-5-3019
URL: <http://www.rinyu.co.jp/kurodake>
E-mail: sounkyo@rinyu.jp

Rinyu Corp. Head Office
Kita 9, Higashi 2, Higashi-ku, Sapporo
060-0909 Hokkaido, Japan
TEL: +81(0)11-711-7106
FAX: +81(0)11-731-1456
URL: <http://www.rinyu.co.jp>
A webmagazine of Hokkaido's culture and lifestyle "Kamui Mintara" <http://kamuihintara.net>

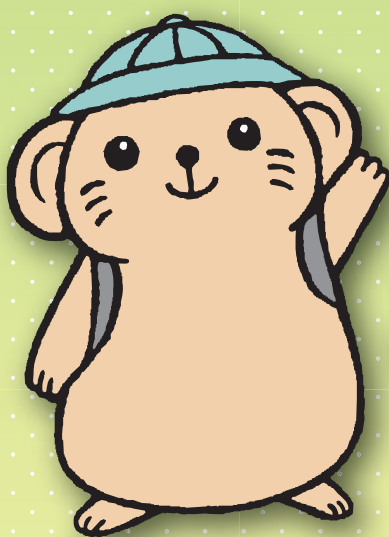


The latest Kurodake news is here

<http://www.rinyu.co.jp/km/>

WELCOME TO MOUNT KURODAKE!

The Mascots of the Kurodake Ropeway

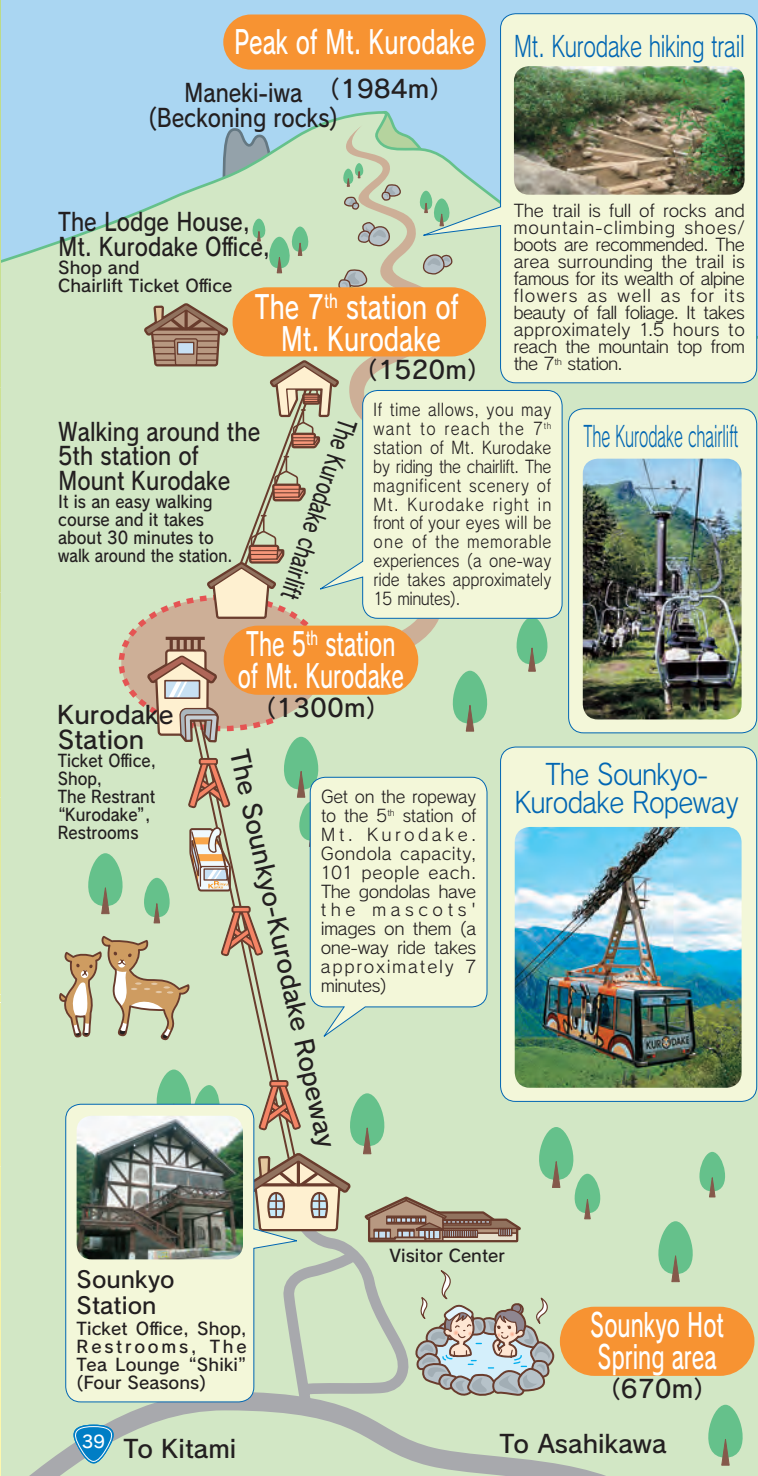


Naki the Pika



Shima the Chipmunk

Mt. Kurodake, known as one of the most beautiful mountains of the Daisetsu mountain range, is easily accessible by Ropeway and chairlift. Each of the four seasons on Mt. Kurodake has their own unique beauty and provides opportunities to enjoy them throughout the year: fresh green leaves in spring, a wealth of alpine flora in summer, colorful fall foliage, snow-covered slopes ideal for skiing and snow-shoe hiking in winter. Please enjoy Mt. Kurodake!



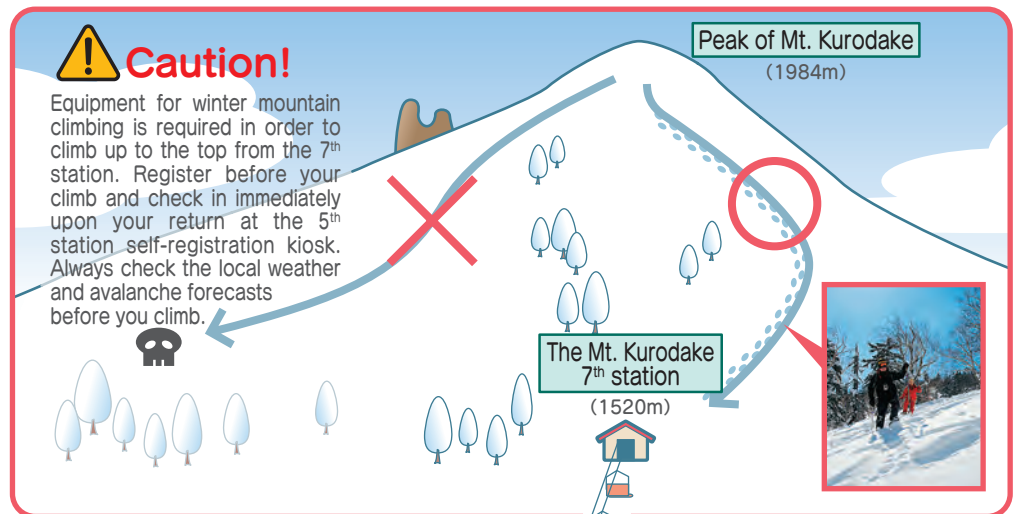
Mt. Kurodake Walking Trail Map (the 5th station)

The distance between the 5th Station Ropeway Station and the Chairlift Platform is around 200 m.

- ①Reference Hall/Contains numerous original photographs of the natural flora and fauna, as well as of the four seasons of the Daisetsu Mountains
- ②Takamatsudai/A viewing platform from where the Mt. Kurodake seems closer. The famous scenic spot for Japanese Alpine Cherry (Prunus nipponica), the Japan's late-blooming cherry tree
- ③The trees with bark-splitting caused by freezing can be observed here
- ④The 5th station Sign Post /Woodpecker holes. Woodpecker is one of the living national treasures of Japan.
- ⑤There are footprints on a promenade left by Hokkaido deer and Hokkaido fox



Mt. Kurodake covered with snow



Snow play area (the 5th - 7th stations of Mt. Kurodake)

From mid-November to early May

